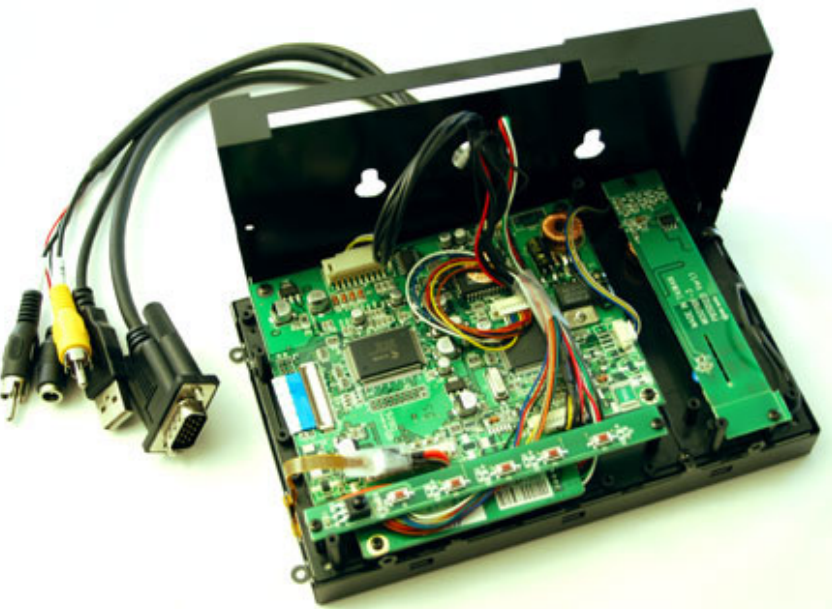




349.00 EUR
incl. 19% VAT, plus [shipping](#)

- High brightness !
- TMR ! Auto Power On !
- 800 nits !
- Open-Frame !



Support: [Dimensions](#) |  [Dimensions \(PDF\)](#) | [800x480 Driver \(Windows 7\)](#)

With the new Open-Frame TFT display-series from CarTFT you get back control : The ruggedized metal frame enables you a stable installation. The single modules (Mainboard, Touchscreen controller, Power inverter and button-frame) can be screwed off from the rear side and being positioned elsewhere. This way you can install the connector cables more easier and the display thickness shrinks also.

Note : This Open-Frame TFT display is an offer primarily meant for business and project customers. End consumers should only handle with unprotected electronic parts with appropriate experience.

Possible additional options (starting from a MOQ of 20 units):

- Speakers
- Different cable lengths
- Other display models/sizes
- Touchscreen RS232 instead of USB
- Other connector types
- [...] Ask us !

Additional informations :

The CTF700-HM delivers an impressive 800 cd/m2 light output – a light level that places it at the very top end of the market in terms of brightness. This light output is achieved with no increase in power consumption over previous models. The model is an active matrix transmissive TFT that offer robust industrial quality and performance with a wide operating temperature range of -30°C to 80°C.

The Display works on basis of the combination of transmissive and Micro-Reflective-Technology (=TMR). TMR connects the advantages of the conventional technology, where the LCD is lighted from the rearside with the advantages of the reflektive TFT-LCD-technology. This way the image quality is improved under direct sunlight.

Unlike a transfective display, TMR is more transmissive than reflective, with some reflective properties. The advantage is better color saturation than a true transfective technology.

With the touchscreen functionality you easily can control your PC. The brilliant VGA-display ensures a maximum readability and sharpness.

AC-Adapter for home usage and a car cigarette lighter adapter are included.

The CTF-700-HM can be used with any PC/MAC with VGA- and USB port.

Driver-CD included, compatible with :

- Windows 95/98/ME/NT4/2000/XP/7/8/8.1/10
- XP Tablet PC Edition
- Windows CE 2.12, 3.0, .net
- Linux RedHat,Mandrake,..
- Macintosh OS 9.x, 10.x
- DOS,..

Specifications	
Screen size	7" digital
Aspect Ratio	16:9 wide TFT screen
Dot Resolution	2400x480= 1,152,000 dots
Physical Resolution	800x480
Supported Resolutions	640x480-1024x768
Color configuration	RGB stripe

<i>Brightness</i>	800 nits
<i>Contrast</i>	500:1
<i>Operating temperature</i>	-30°C to 80°C
<i>Power input</i>	DC 9-30V
<i>Power consumption</i>	max. 8W
<i>Video system</i>	2x Video inputs (PAL/NTSC) 1x VGA input
<i>Dimensions</i>	167.9 x 107.9 x 32.6 mm Display : 154 x 93 mm
<i>Video input signal</i>	1.0Vp-p, composite video
<i>Features</i>	Full function OSD control (englisch) Auto Power On/Off Autodimmer
<i>What is included ?</i>	- 7" VGA Open-Frame Touchscreen TFT with Video-support
	- Power Adapter f. EU 230V
	- Cigarette Lighter Adapter
	- Touchscreen Driver-CD
	- Manual



Displays with [True-800x480-Support](#) achieve a pixel accurate view at 800x480@70Hz